

Specification

- Flange dimensions :DIN2533
- Face to face : DIN3202-F6
- Testing confirm to DIN3230

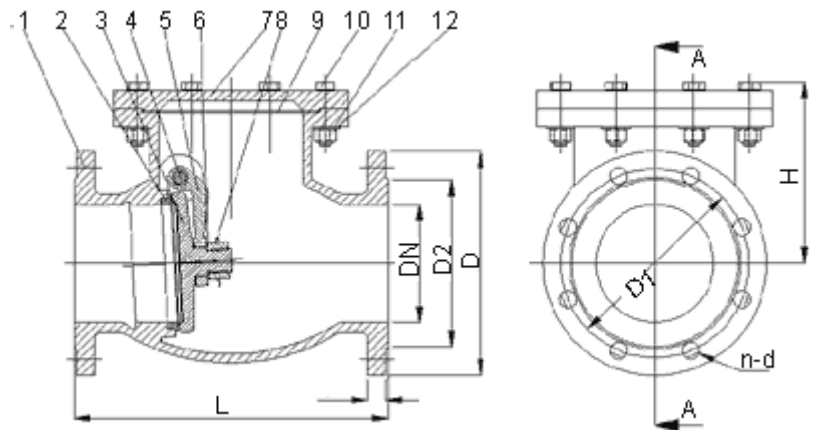
Application

- Working Temp: 100 °C
- Working Pressure: PN10 or PN16
- Suitable Media: Water, Steam, Oil etc.
- Not recommended for Steam Service.
- **Caution:** FREEZING WEATHER PRECAUTION - Subsequent to testing a piping system, gate valves should be left in an open position to allow complete drainage.

Materials

No	Part Name	Materials
1	Body	ASTM CF8M A126A(B) 1.4408
2	Seat Ring	ASTM WELDED B36/B62,SS410 SS304
3	Disc	ASTM CF8M A126A(B) 1.4408
4	Hinge Pin	A216 WCB SS304
5	Hinge	ASTM A126A(B) SS304
6	Nut	A216 WCB SS304
7	Bonnet	ASTM CF8M A126A(B) 1.4408
8	Split Pin	A216 WCB SS304
9	Bonnet Gasket	Graphite PTFE
10	Bolt	A216 WCB SS304
11	Washer	A216 WCB SS304
12	Nut	A216 WCB SS304

Dimensions (DIN2533 Flange drilling)



DN	D	D1	D2	L	H	b	n	d
50	165	125	102	200	150	17	4	18
65	185	145	122	240	160	17	4	18
80	200	160	138	260	170	19	8	18
100	220	180	158	300	180	21	8	18
125	250	210	188	350	215	23	8	18
150	285	240	212	400	260	23	8	23
200	340	295	268	500	294	27	12	23
250	405	355	320	600	370	29	12	27
300	460	410	378	700	412	29	12	27
350	520	470	438	800	445	32	16	27
400	580	525	490	900	505	34	16	30